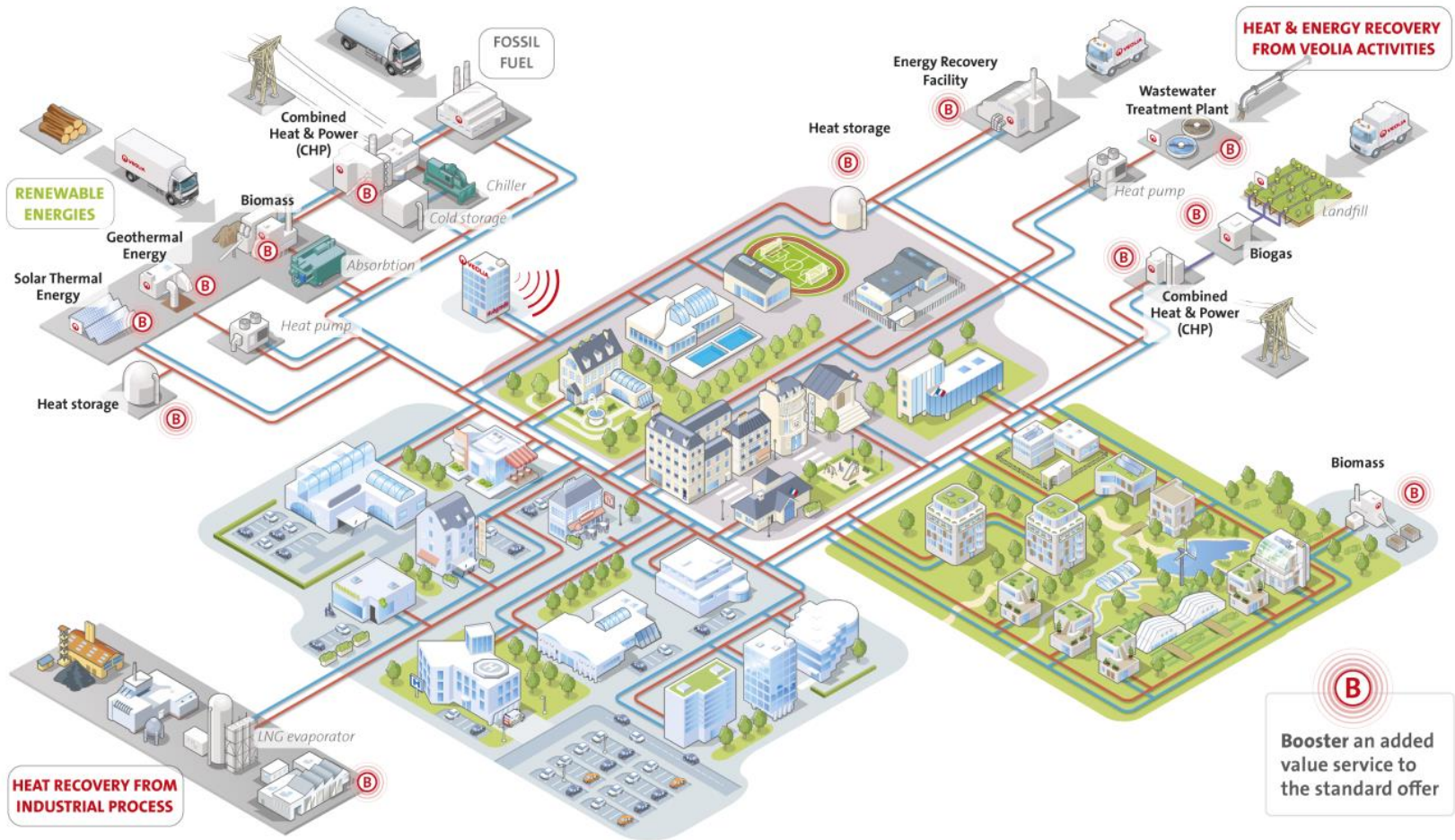


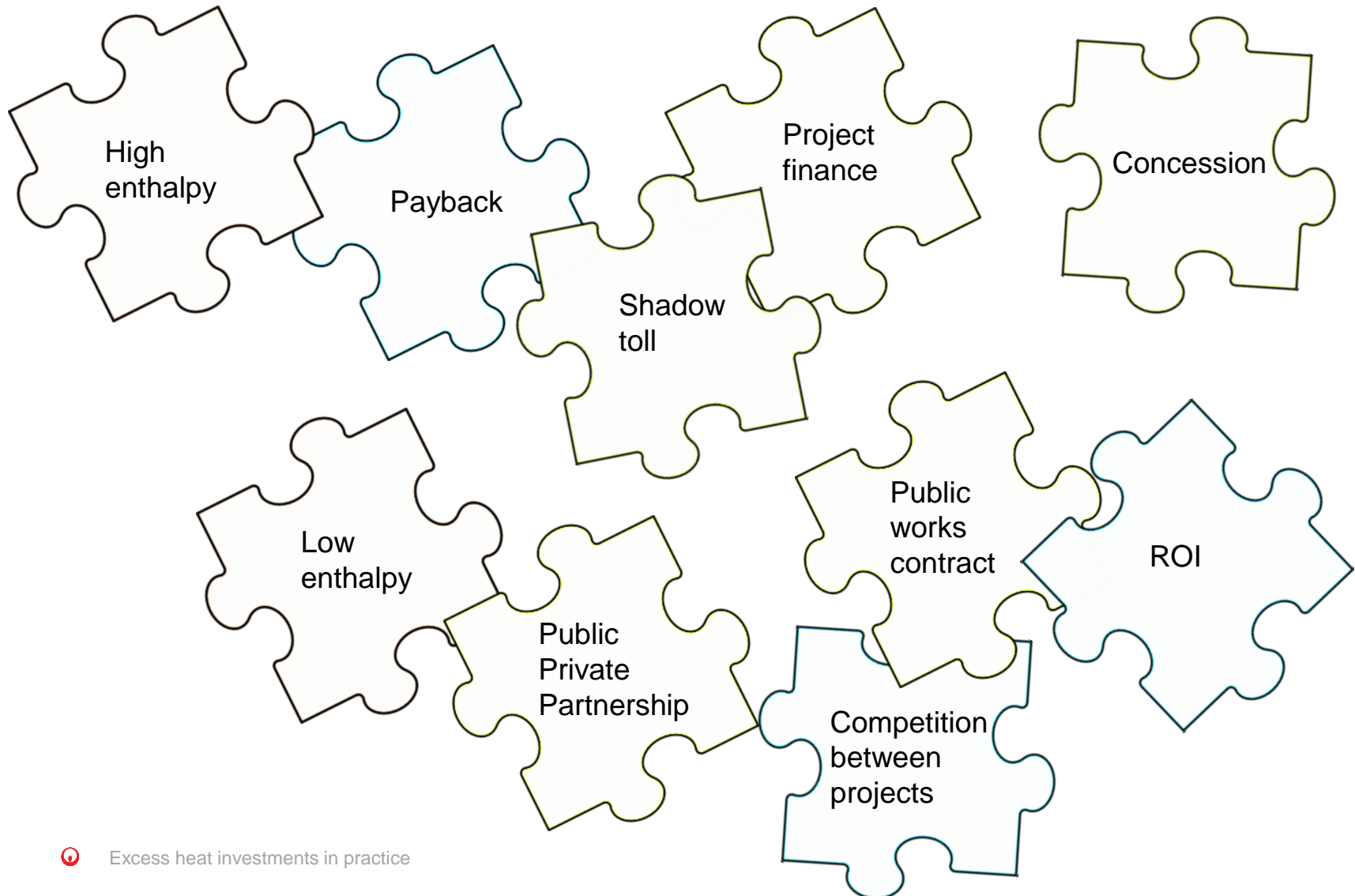
Excess heat investments in practice  
*Brussels 13th February 2019*



# Veolia's proposal



# Financial challenge

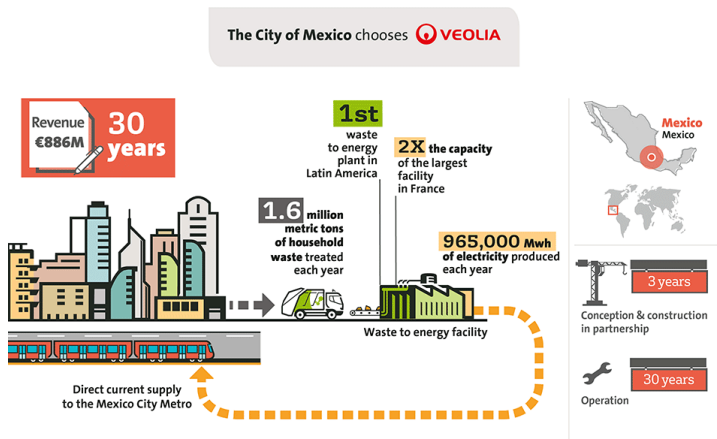




# Examples

## Mexico- City of Mexico

In Mexico, **Veolia** will build and operate one of the largest waste to energy facilities in the world



## UK- Sheffield



**1.6 million tons** of household rubbish a year.

**965.000 MWh of electricity** direct to the Mexico City metro.

**225,000 tonnes** of household rubbish a year.

**21 MW of electricity** to the National Grid. That is enough to power more than 25,000 homes.

Up to **45 MW of heat** is supplied to over **140 buildings** connected to the District Energy Network.